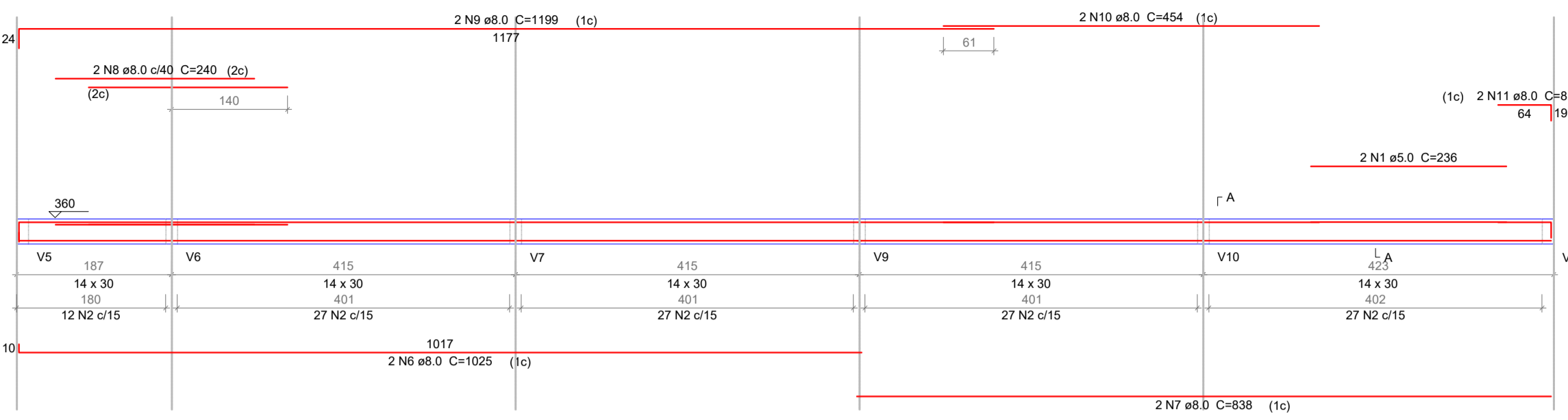
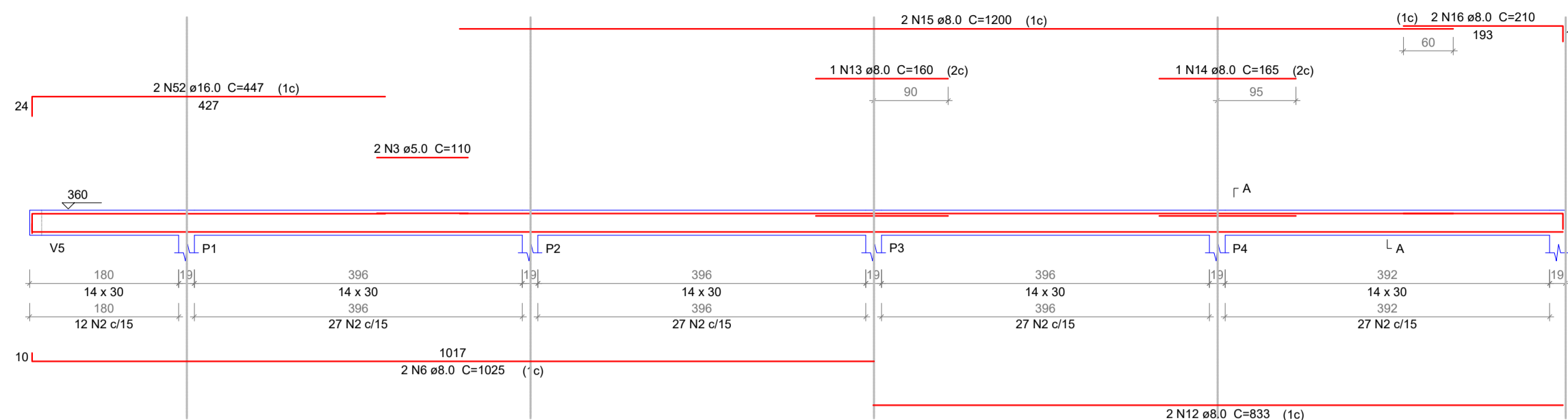


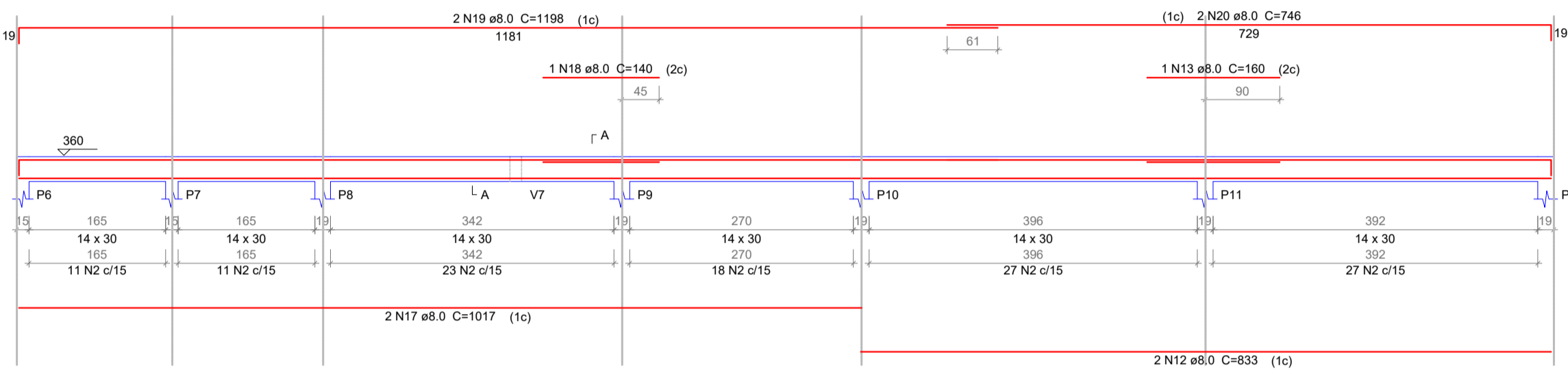
V1



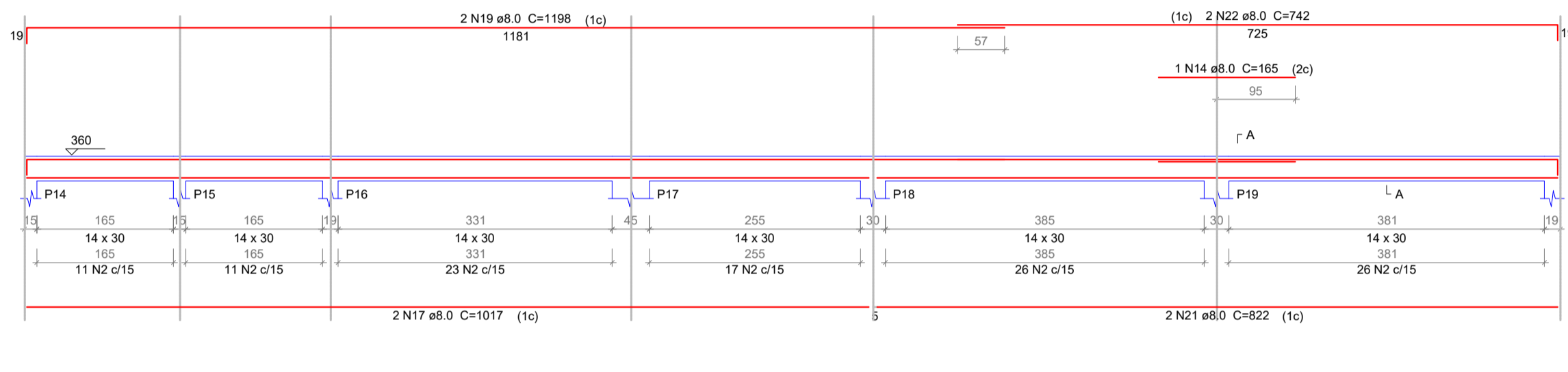
V2



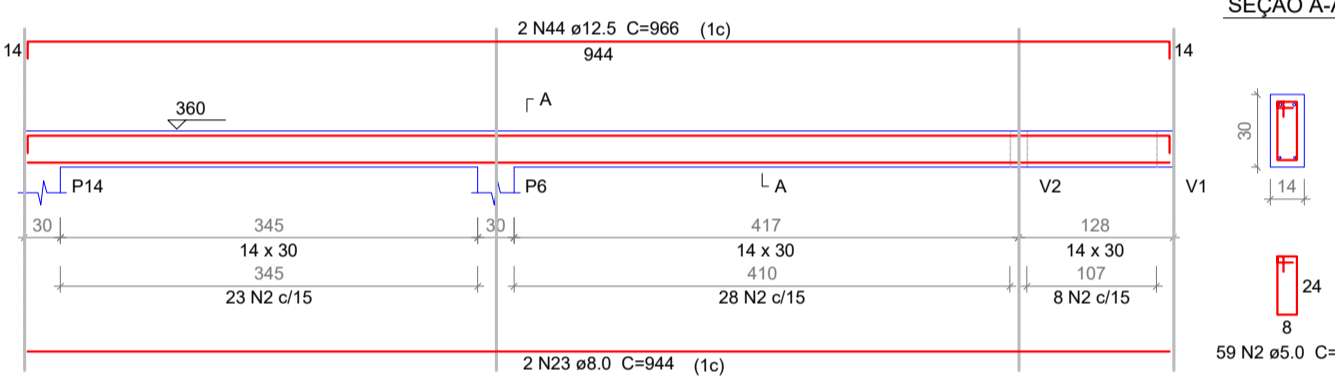
V3



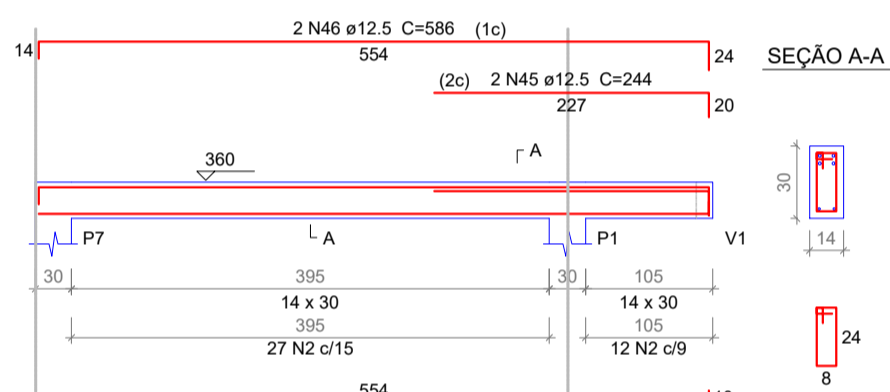
V4



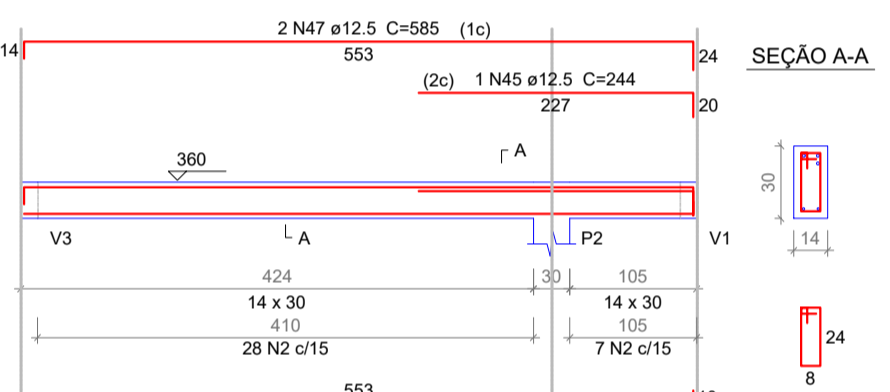
V5



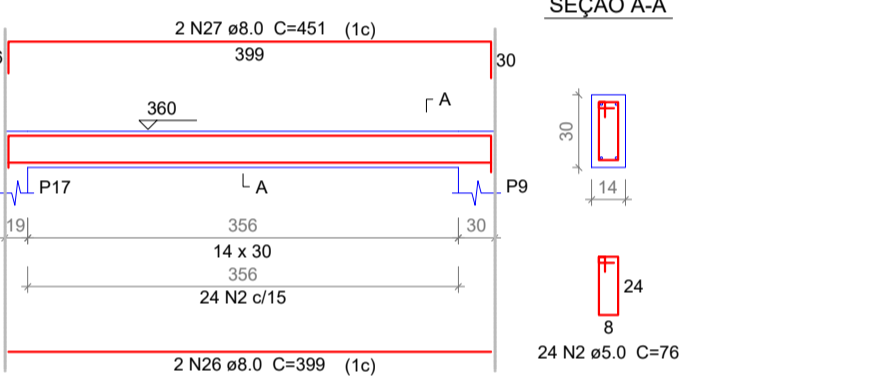
V6



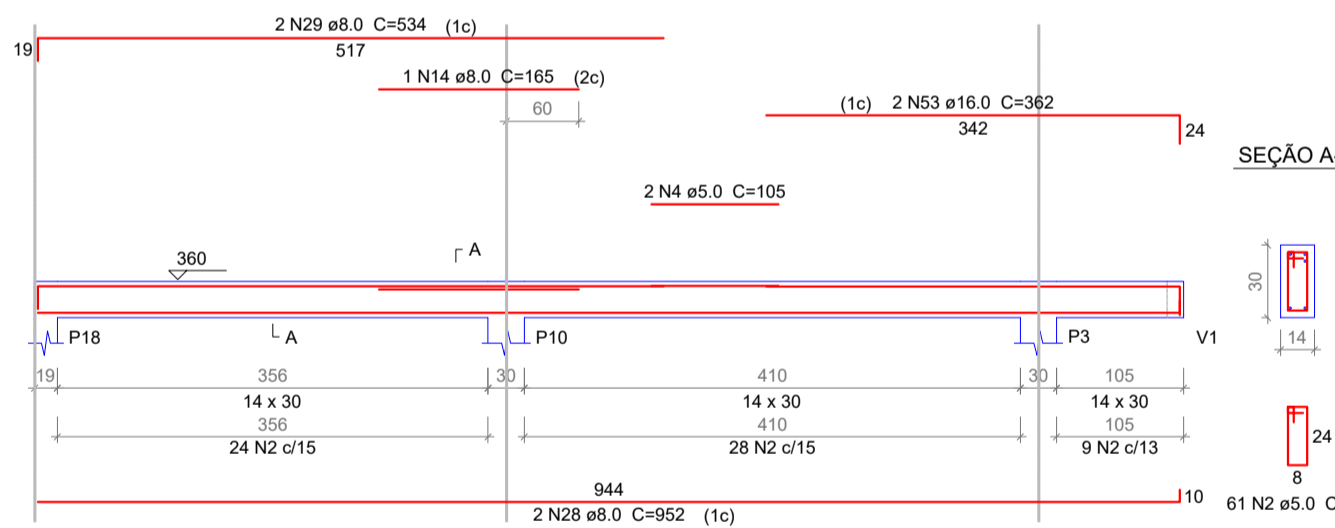
V7



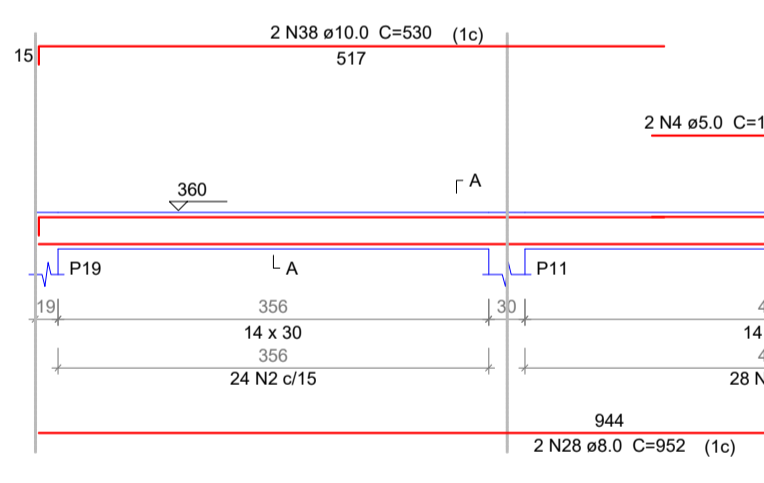
V8



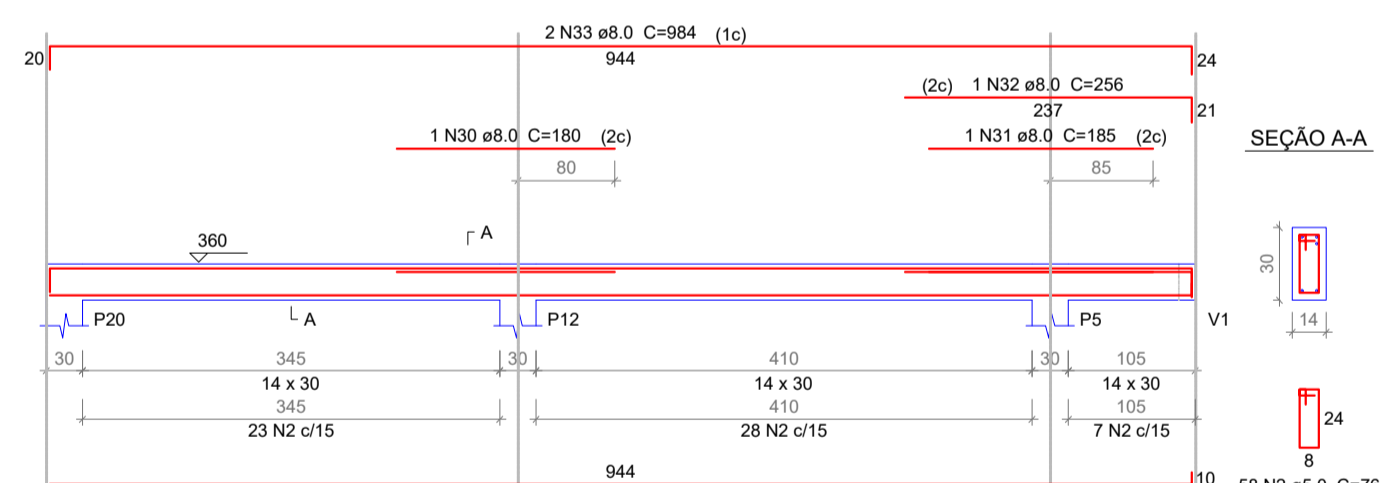
V9



V10

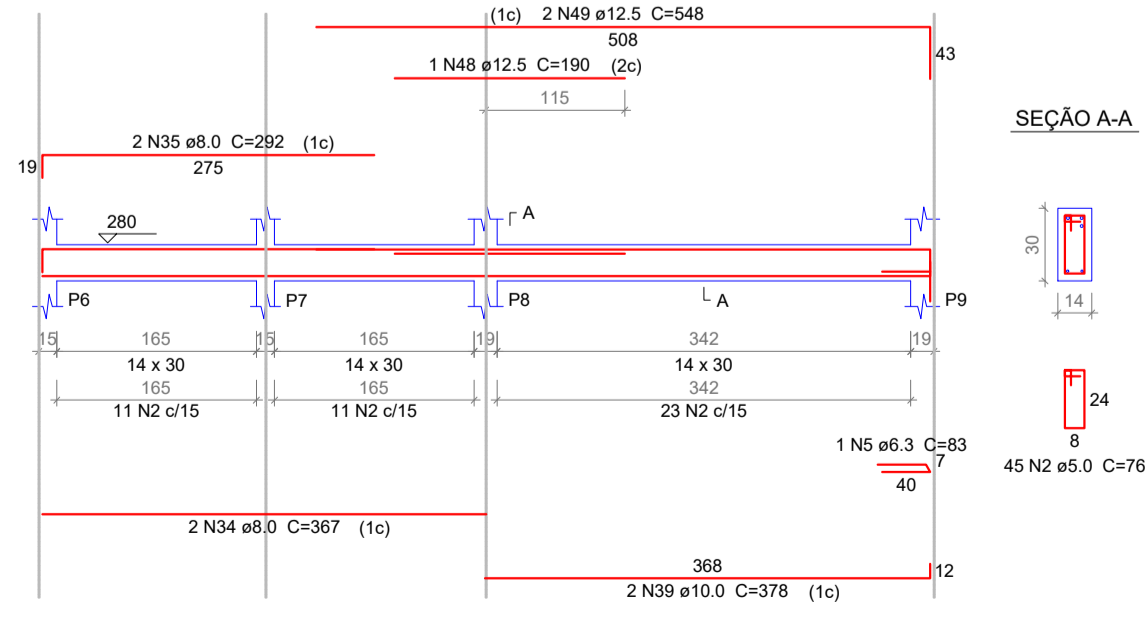


V11

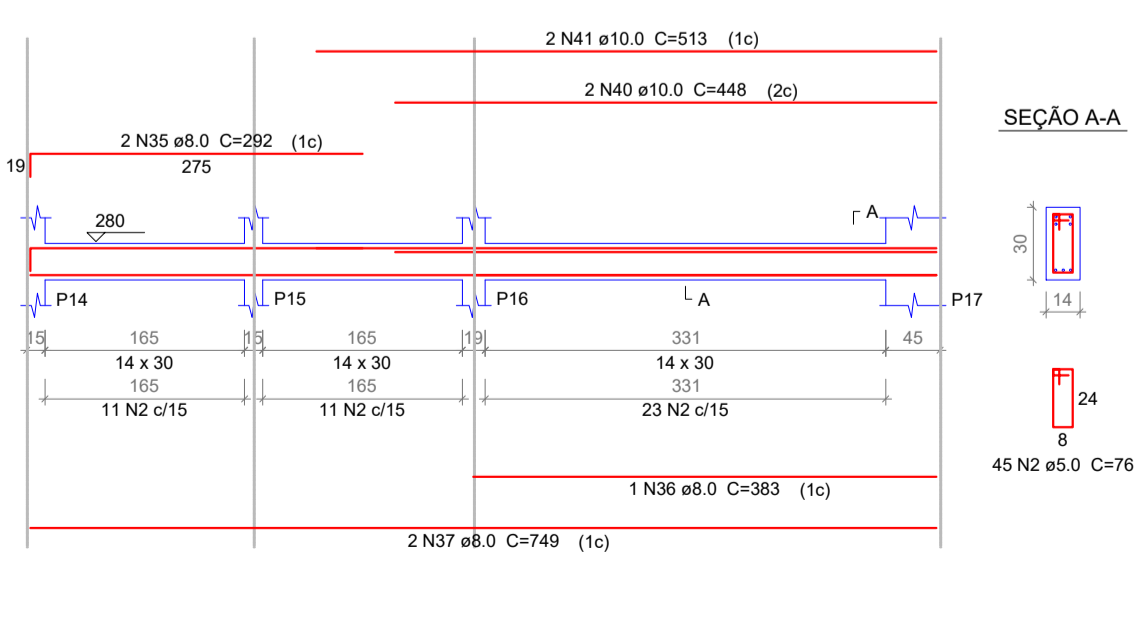


9 Armadura das Vigas da Caixa d' água ( H=2,80m ) SEM ESCALA

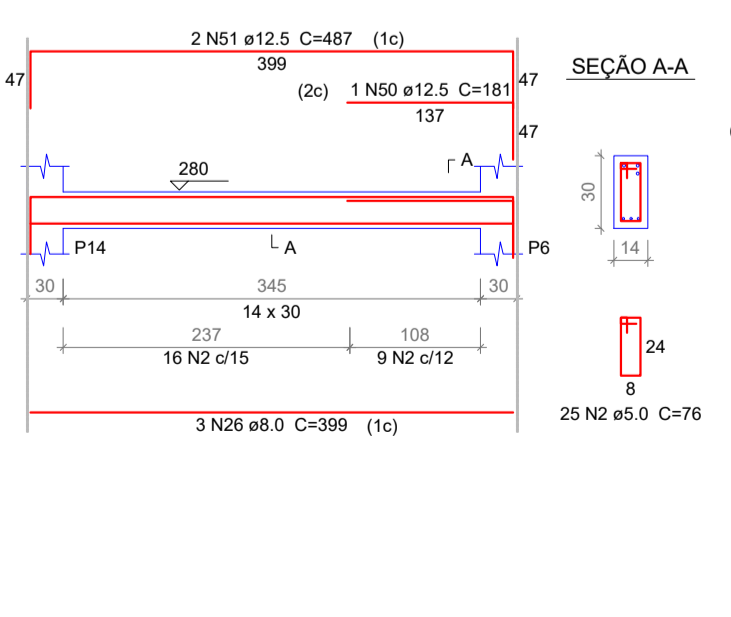
V12



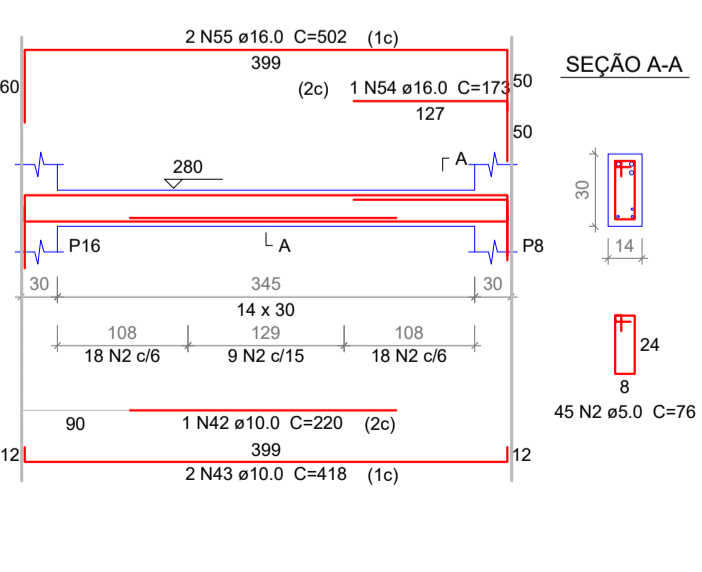
V13



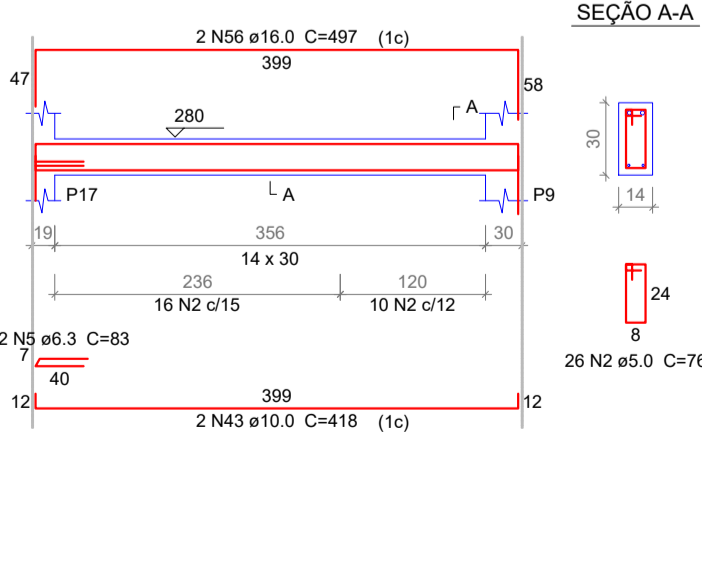
V14



V15



V16



Relação do aço

ACO	N	DIAM	Q	UNIT (cm)	C TOTAL (cm)
CA60	1	5.0	2	236	472
	2	5.0	966	76	7596
	3	5.0	2	110	220
	4	5.0	4	105	420
	5	6.3	3	83	249
	6	8.0	4	1025	4100
	7	8.0	2	838	1676
	8	8.0	2	240	480
	9	8.0	2	1199	2398
	10	8.0	2	454	908
	11	8.0	2	1017	4068
	12	8.0	4	833	3332
	13	8.0	2	160	320
	14	8.0	2	165	330
	15	8.0	2	1200	2400
	16	8.0	2	210	420
	17	12.5	4	1017	4068
	18	8.0	1	140	140
	19	8.0	4	1198	4792
	20	8.0	2	746	1492
	21	8.0	2	822	1644
	22	8.0	2	742	1484
	23	8.0	2	944	1888
	24	8.0	2	562	1124
	25	8.0	2	561	1122
	26	8.0	5	399	1995
	27	8.0	2	451	902
	28	8.0	6	952	5712
	29	8.0	2	534	1068
	30	8.0	1	180	180
	31	8.0	1	185	185
	32	8.0	1	256	256
	33	8.0	2	994	1988
	34	8.0	2	367	734
	35	8.0	4	292	1168
	36	8.0	1	383	383
	37	8.0	2	749	1498
	38	10.0	2	530	1060
	39	10.0	2	378	756
	40	10.0	2	448	896
	41	10.0	2	513	1026
	42	10.0	1	220	220
	43	10.0	4	418	1672
	44	12.5	2	966	1932
	45	12.5	3	244	732
	46	12.5	2	586	1172
	47	12.5	2	585	1170
	48	12.5	1	596	596
	49	12.5	2	566	1132
	50	12.5	1	181	181
	51	16.0	2	487	974
	52	16.0	2	447	894
	53	16.0	4	382	1528
	54	16.0	1	173	173
	55	16.0	2	502	1004
	56	16.0	2	497	994

Resumo do aço

ACO	DIAM	C TOTAL (m)	PESO + 10 % (kg)
CA50	6.3	2.5	0.7
	8.0	505	219.2
	10.0	66.3	38.2
	12.5	74.5	78.9
	16.0	45.2	78.4
CA60	5.0	768.1	130.2
PESO TOTAL			
CA50	415.3		
CA60	130.2		

Vol. de concreto total (C-25) = 6.49 m³  
 Área de forma total = 114.36 m²

8 Armadura das vigas da Cobertura SEM ESCALA

NOTAS:

ESTADO DE SANTA CATARINA  
 MUNICIPIO DE QUILOMBO  
 Fone: (49) 3346-3242  
 Fone: (49) 3346-3311

RESPONSÁVEL TÉCNICO:

CLEISON ZOTTIS  
ENGENHEIRO CIVIL  
CREASC: 152931-9

MUNICIPIO DE QUILOMBO

MUNICIPIO DE QUILOMBO  
SILVANO DE PARIZ  
PREFEITO MUNICIPAL

TIPO: **PROJETO ESTRUTURAL**

ENDEREÇO DA OBRA: QUILOMBO - SC LINHA SALTO SAUDADES CHÁCARA N° 59	ÁREA (m²): 153,98 m²
CONTEÚDO: ARMADURA DAS VIGAS DA COBERTURA ARMADURA DAS VIGAS DA CAIXA D' ÁGUA	TAXA DE OCUPAÇÃO: -
PROJETO: CENTRO COMERCIAL SALTO SAUDADES	TAXA DE PERMEABILIDADE: -
LOCAL E DATA: JULHO DE 2019 QUILOMBO-SC, CEP: 89850-000 BAIRRO-CENTRO, RUA DUQUE DE CAXIAS, N° 165	PRANCHA: <b>05</b> 05/05
DESENHISTA: SANDRO SERAFINI	TAMANHO DA PRANCHA: A1 841 X 594 (mm)