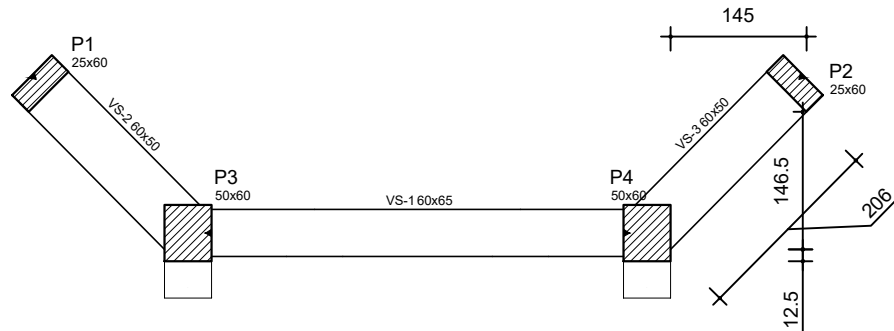
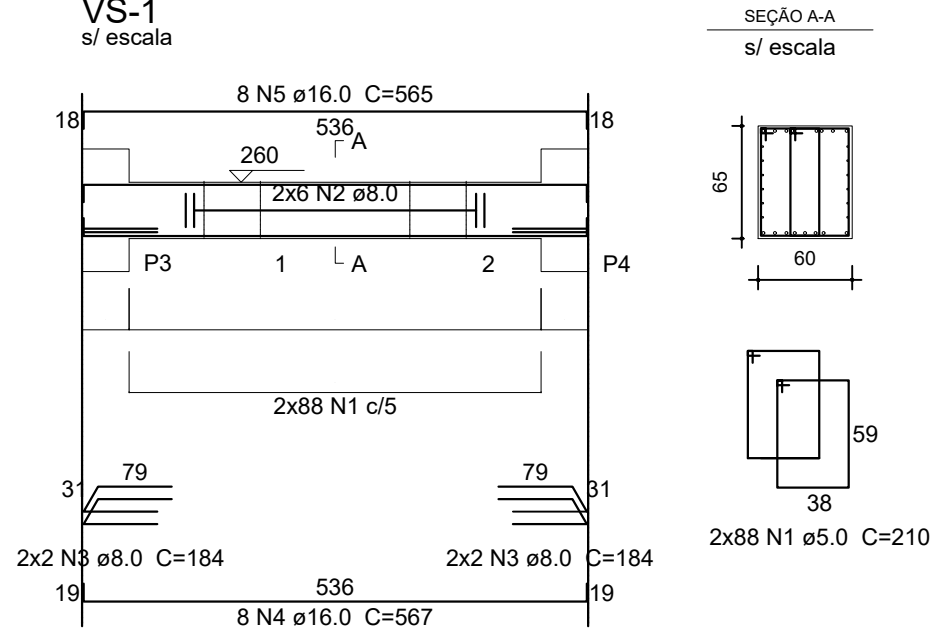


Forma do pavimento viga superior

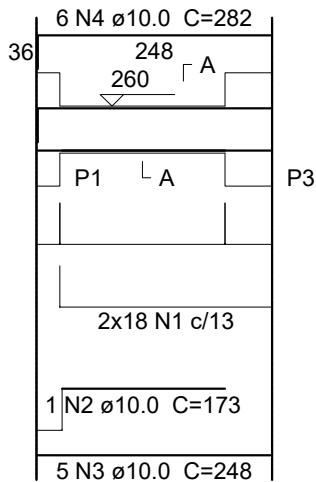


Forma do pavimento viga superior s/ escala

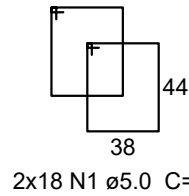
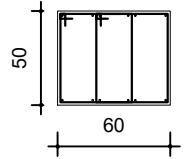
Viga Nivel Superior
VS-1
s/ escala



Viga Nivel Superior
VS-2
s/ escala

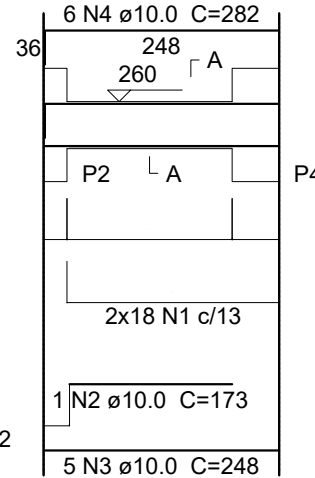


SEÇÃO A-A
s/ escala

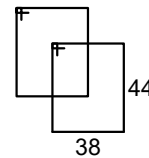
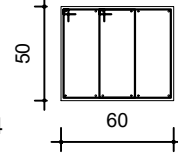


2x18 N1 ø5.0 C=182

Viga Nivel Superior
VS-3
s/ escala



SEÇÃO A-A
s/ escala



2x18 N1 ø5.0 C=182

1. Classe de Agressividade Ambiental = II (NBR 6118/14)
2. Resistências Características dos Concretos:
Elementos de Concreto Armado $f_{ck}=30\text{MPa}$
Relação A/C $\leq 0,60$
Cobrimento $\geq 3,0\text{ cm}$

OBRA:			
PONTE LINHA SANTA LÚCIA			
OBRA:			
PREFEITURA MUNICIPAL DE QUILOMBO - SC			
CARIMBO E ASS. PROPRIETÁRIO:	DATA:	ÁREA TOTAL:	
	14/08/2017	60,00 M2	
DESCRIÇÃO:			ESCALA:
ARMADURA VIGA SUPERIOR			S/ESCALA
CREA/SC 144569-0	RESPONSÁVEL TÉCNICO PROJETO:		PRANCHA:
	RONALDO CASAGRANDE		08